



*jordan fishwick*

**MANCHESTER**  
Heathside Road

Available with  
**Reposit**  
No deposit needed

**Heathside Road,  
Manchester, M20 4XH**

**£1,650 Per Calendar Month**



### The Property

\*\*\* AVAILABLE JANUARY \*\*\* A lovely presented semi detached home located in a popular residential street in Withington. Close to all local amenities of Ladybarn, Withington & Didsbury making it ideal for professional sharers. The property comprises of; entrance hall, front large double bedroom, open reception lounge and dining room and kitchen with fully fitted appliances. To the first floor there are three generous bedrooms, smaller spare room that is perfect for a home office and a three piece bathroom suite. The property also benefits from a large rear garden, off road parking and gas central heating. Permit parking required for the street. Viewing highly recommended. Fully Furnished. To view please contact our Didsbury office

View our Virtual Tour Here - <https://youtu.be/fsDV4DU6y1g>

EPC Rating - C // Council Tax Band C

### Directions

**M20 4XH**



- Available January
- Three Double Bedrooms
- Open Reception Room
- Small Home Office
- Ideal for Professional Sharers
- Fully Furnished
- Large Garden & Off Road Parking
- Great Location
- Council Tax Band C
- EPC Rating C

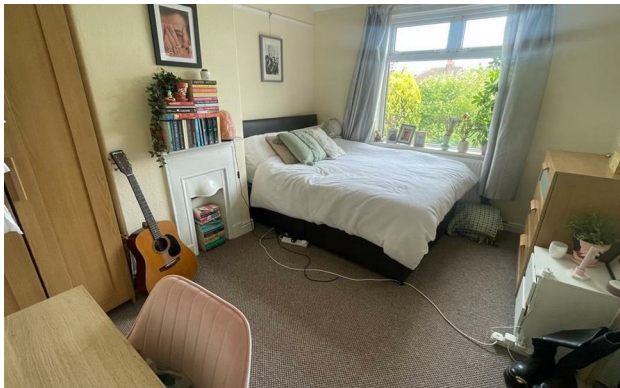
Postcode - M20 4XH

EPC Rating - C

Floor Area - sq ft

Local Authority - Manchester

Council Tax - C





These particulars are believed to be accurate but they are not guaranteed and do not form a contract. Neither Jordan Fishwick nor the vendor or lessor accept any responsibility in respect of these particulars, which are not intended to be statements or representations of fact and any intending purchaser or lessee must satisfy himself by inspection or otherwise as to the correctness of each of the statements contained in these particulars. Any floorplans on this brochure are for illustrative purposes only and are not necessarily to scale.

Offices also at: Wilmslow, Macclesfield, Hale, Sale, Chorlton, Glossop, Manchester & Salford

757-759 Wilmslow Road, Didsbury Village, Manchester

**0161 445 4480**

[didsbury@jordanfishwick.co.uk](mailto:didsbury@jordanfishwick.co.uk)  
[www.jordanfishwick.co.uk](http://www.jordanfishwick.co.uk)